

Characteristics of quadratics

For full credit, show all work on this page.

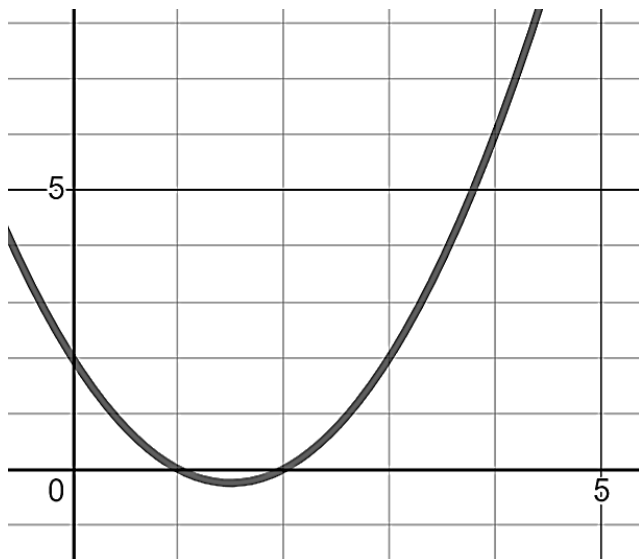
Name: _____

Date: _____

Period: _____

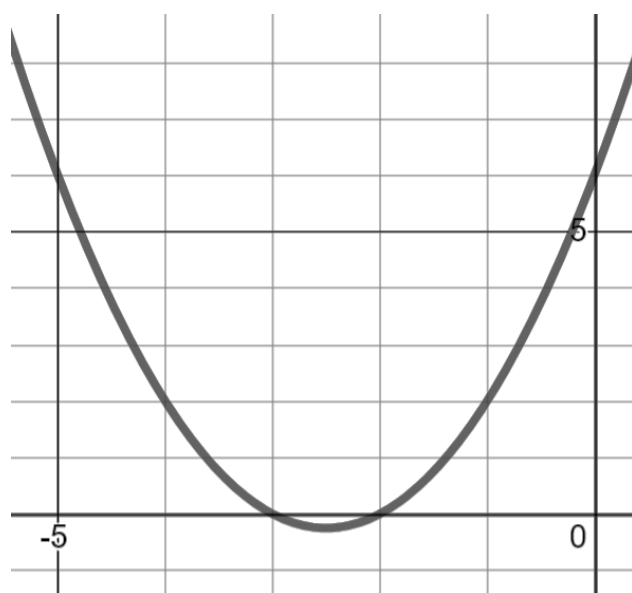
I can identify the key characteristics of a quadratic graph.

1. The graph shown represents the function $f(x) = x^2 - 3x + 2$. Identify each of the following characteristics. (CA CCSSM F-IF.4)



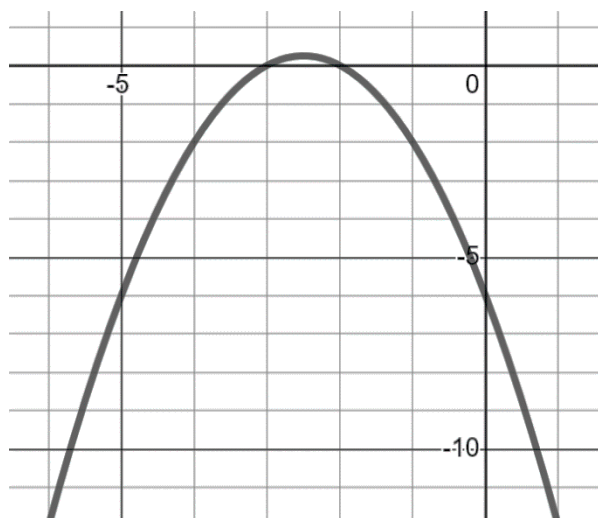
domain	<input type="text"/>
range	<input type="text"/>
x -intercepts	<input type="text"/>
y -intercept	<input type="text"/>
axis of symmetry	<input type="text"/>
vertex	<input type="text"/>
interval of increase	<input type="text"/>
interval of decrease	<input type="text"/>

2. The graph shown represents the function $f(x) = x^2 + 5x + 6$. Identify each of the following characteristics. (CA CCSSM F-IF.4)



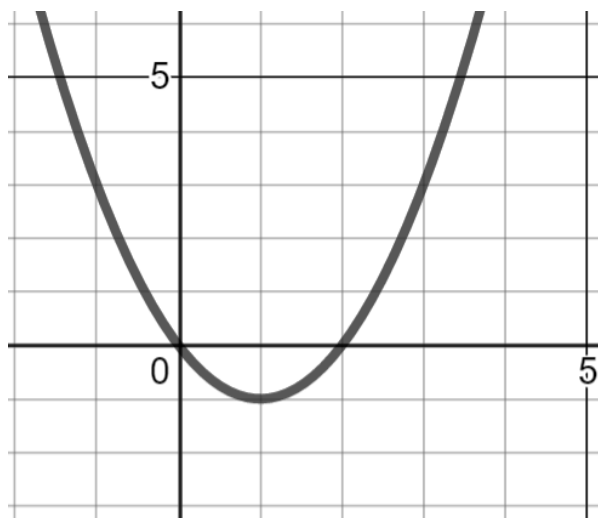
domain	<input type="text"/>
range	<input type="text"/>
x -intercepts	<input type="text"/>
y -intercept	<input type="text"/>
axis of symmetry	<input type="text"/>
vertex	<input type="text"/>
interval of increase	<input type="text"/>
interval of decrease	<input type="text"/>

3. The graph shown represents the function $f(x) = -x^2 - 5x - 6$. Identify each of the following characteristics. (CA CCSSM F-IF.4)



domain	<input type="text"/>
range	<input type="text"/>
x-intercepts	<input type="text"/>
y-intercept	<input type="text"/>
axis of symmetry	<input type="text"/>
vertex	<input type="text"/>
interval of increase	<input type="text"/>
interval of decrease	<input type="text"/>

4. The graph shown represents the function $f(x) = x^2 - 2x$. Identify each of the following characteristics. (CA CCSSM F-IF.4)



domain	<input type="text"/>
range	<input type="text"/>
x-intercepts	<input type="text"/>
y-intercept	<input type="text"/>
axis of symmetry	<input type="text"/>
vertex	<input type="text"/>
interval of increase	<input type="text"/>
interval of decrease	<input type="text"/>