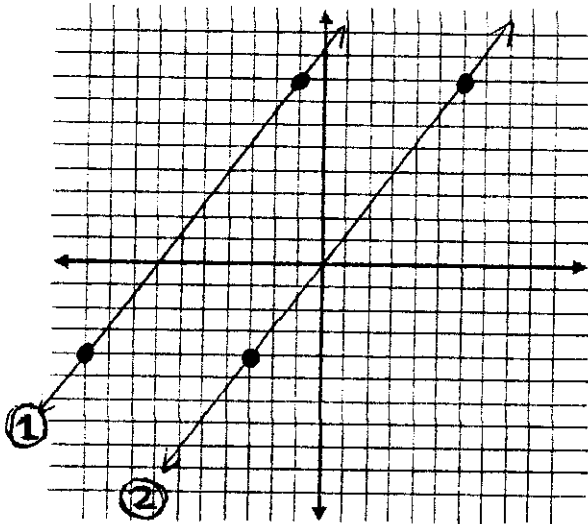


Using Slope to Determine if Lines are Parallel or Perpendicular

Compare the slopes of each line to determine if they are parallel.



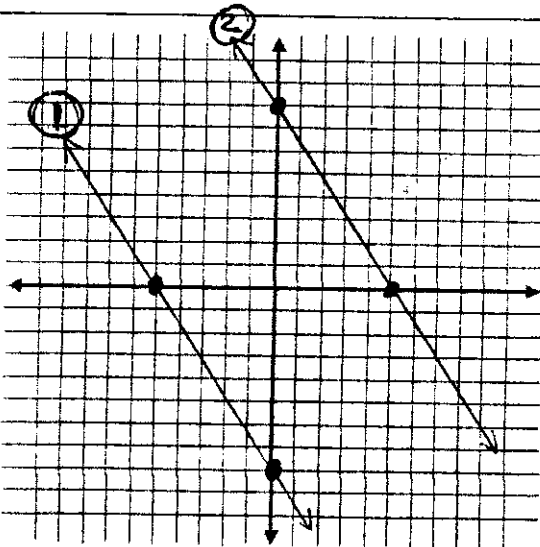
Slope of Line 1:

Slope of Line 2:

Are the 2 Lines Parallel:

yes

no



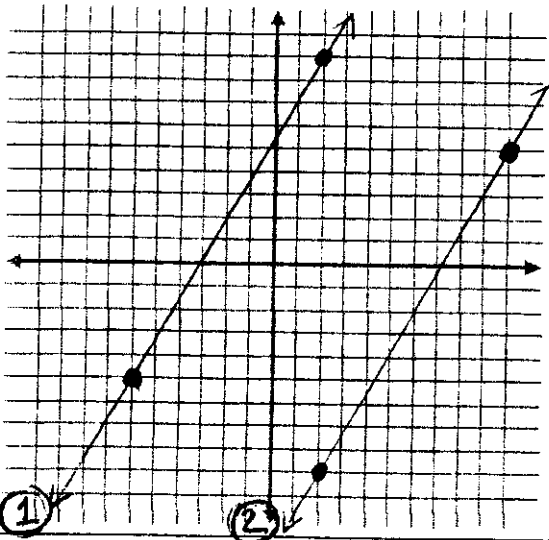
Slope of Line 1:

Slope of Line 2:

Are the 2 Lines Parallel:

yes

no



Slope of Line 1:

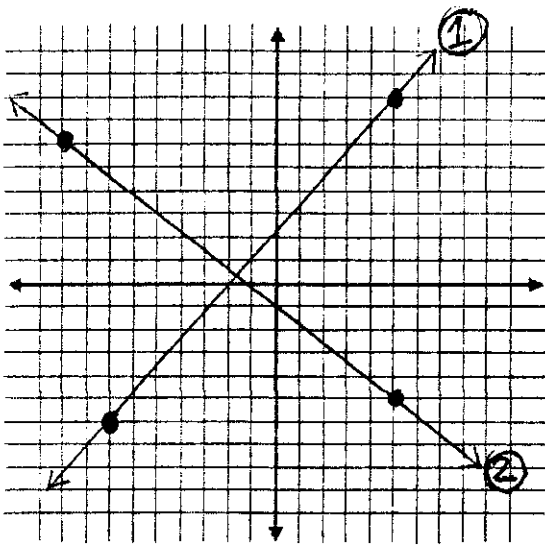
Slope of Line 2:

Are the 2 Lines Parallel:

yes

no

Compare the slopes of the two lines to determine if they are Perpendicular.



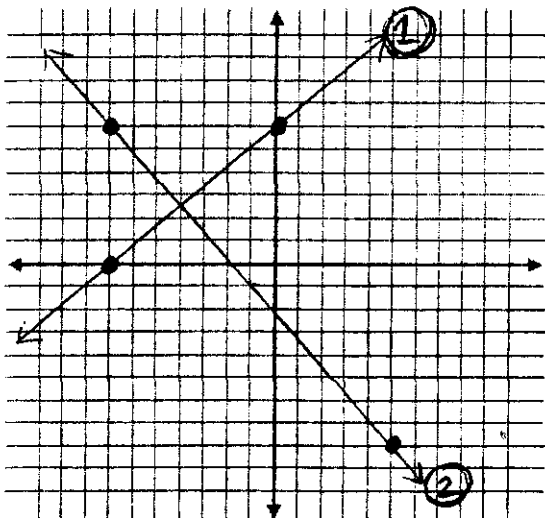
Slope of Line 1:

Slope of Line 2:

Are the 2 Lines Perpendicular:

yes

no



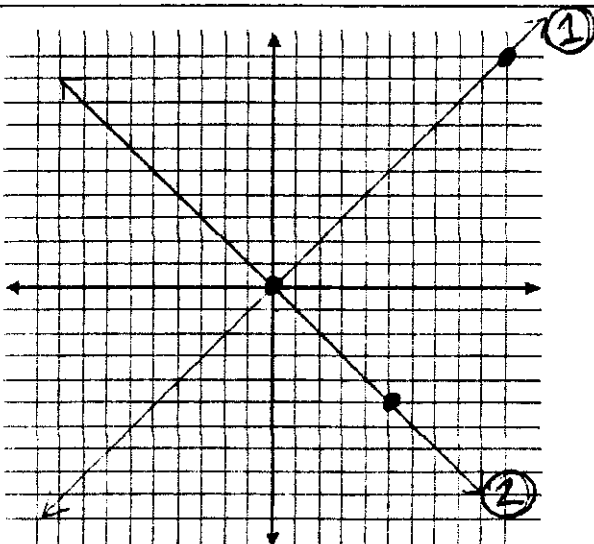
Slope of Line 1:

Slope of Line 2:

Are the 2 Lines Perpendicular:

yes

no



Slope of Line 1:

Slope of Line 2:

Are the 2 Lines Perpendicular:

yes

no