

Parent Graphs & Transformations

For problems 1- 7, please give the name of the parent function and describe the transformation represented. Give the domain and range of each function.

1. $g(x) = x^2 - 12$ Parent: _____

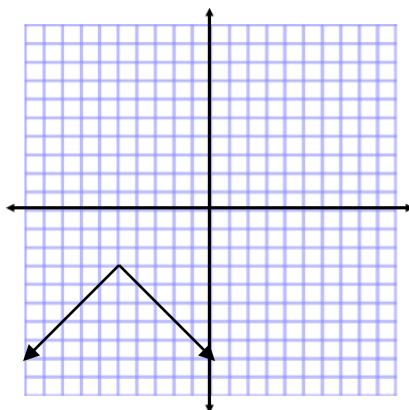
Transformations: _____

Domain _____ Range _____

2. Parent: _____

Transformations: _____ Equation _____

Domain _____ Range _____

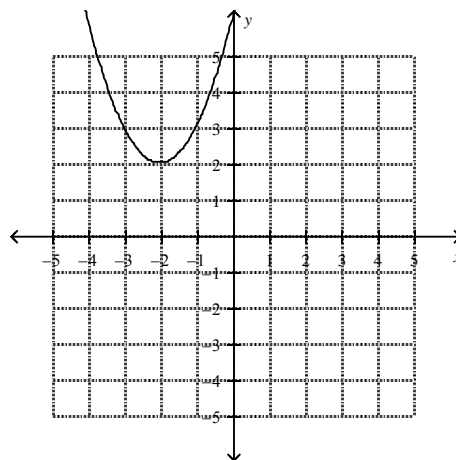


3. Parent: _____

Transformations: _____

Equation _____

Domain _____ Range _____



4. $g(x) = -(x+1)^3 + 3$

Parent: _____

Transformations: _____

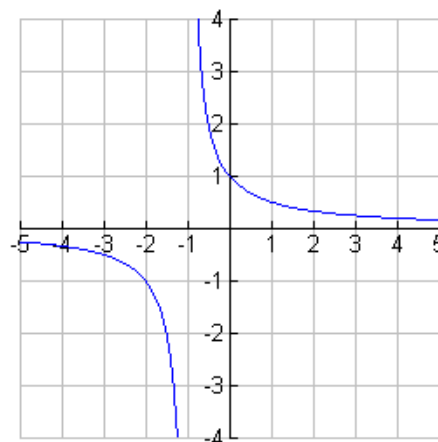
Domain _____ Range _____

5. Parent: _____

Transformations: _____

Equation _____

Domain _____ Range _____



6. $f(x) = \sqrt{x+4} - 3$

Parent: _____

Transformations: _____

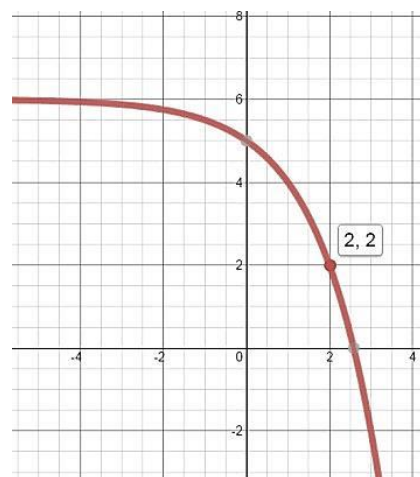
Domain _____ Range _____

7. Parent: _____

Transformations: _____

Equation _____

Domain _____ Range _____



8. In your own words, describe the best method to remember the effects of a , h , and k on a parent function,

$$a \cdot f(x+h) + k.$$
